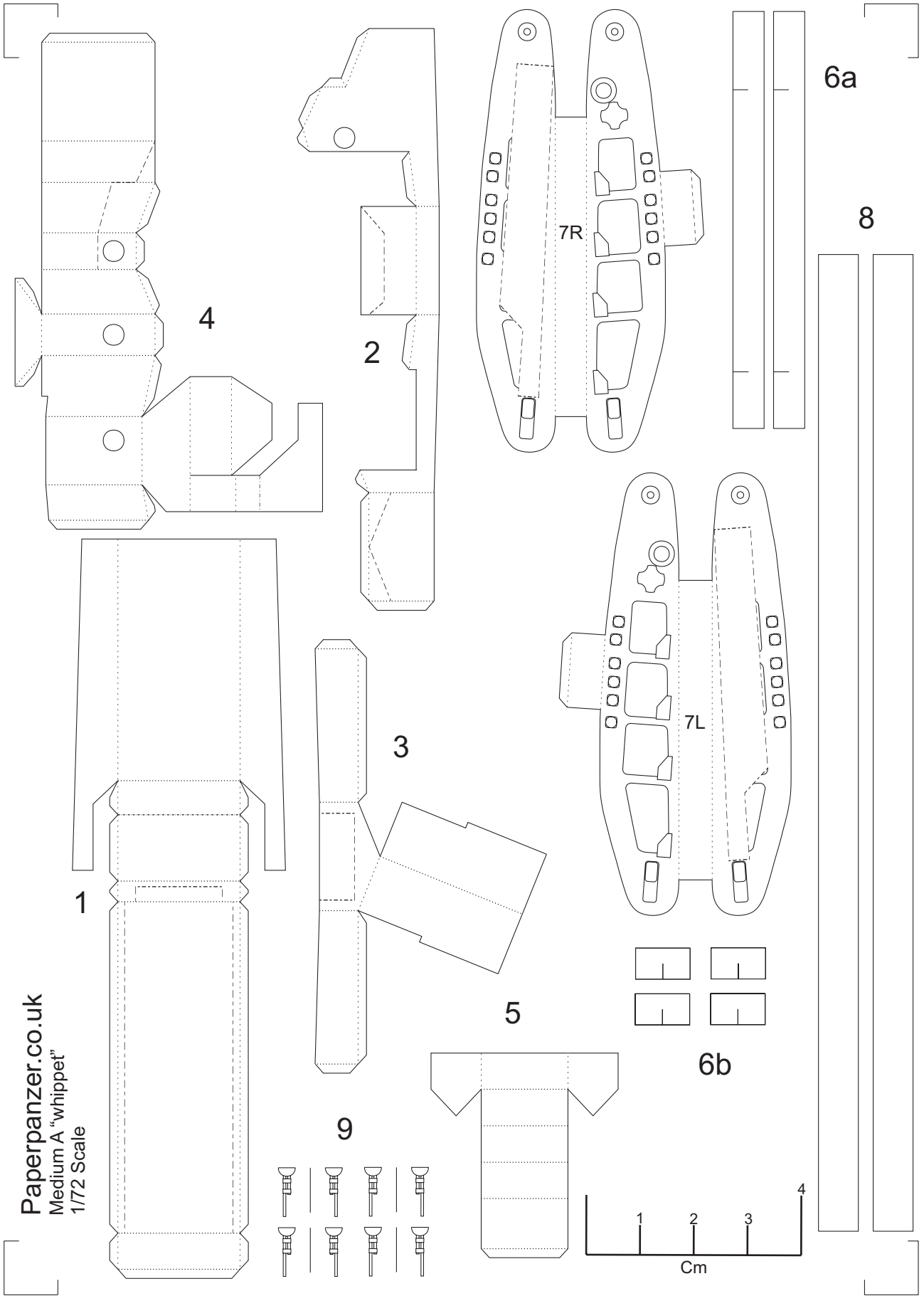


Paperpanzer.co.uk
Medium A "whippet"
1/72 Scale



Paperpanzer.co.uk
Medium tank A "Whippet"

Printing Instructions

This model has been designed to be printed on an A4 sheet of 120 – 160gsm card.

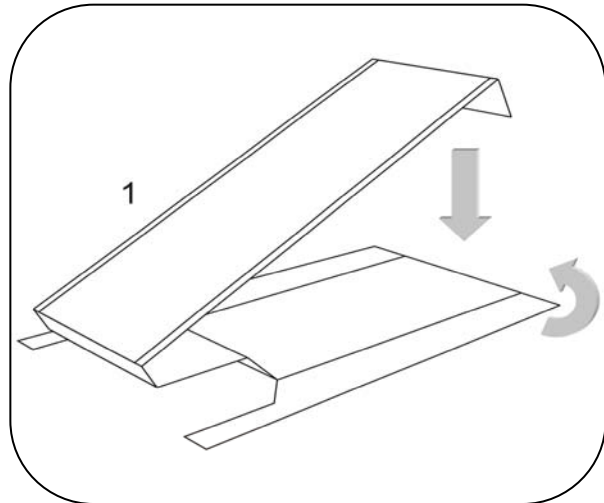
Tools Needed

Scissors or Sharp Model Knife
PVA Glue
Ruler

Model Construction

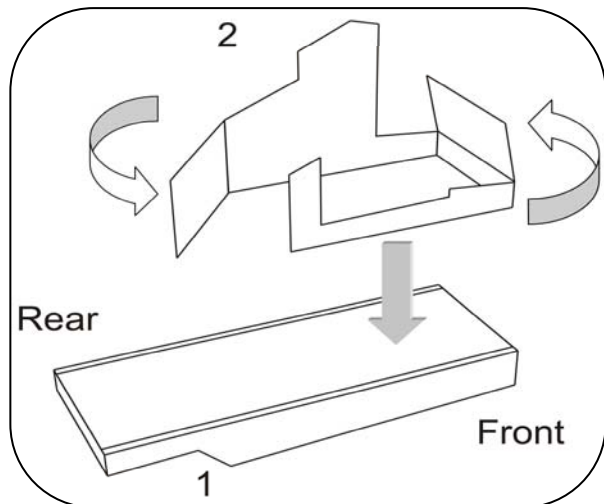
Cut Line	—————
Ridge Fold Line
Valley Fold Line	- - - - -
Attached Parts Outline

- 1, Cut out the hull (part 1), score along dotted lines and form the main body and glue, then fold in and glue the sides.



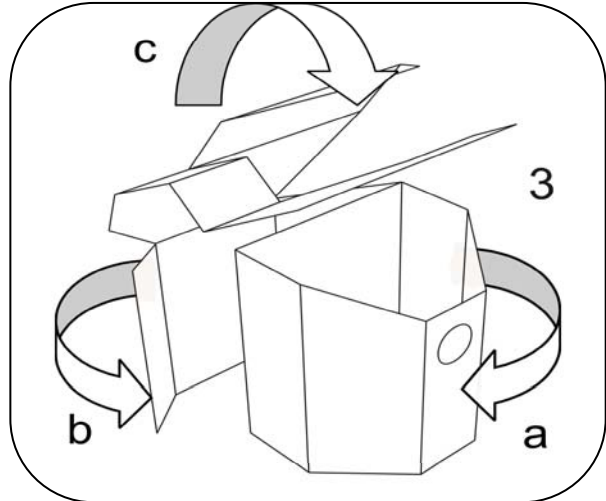
- 2, Cut out the upper body (part 2), score along dotted lines and glue together. Once dry attach it to the main body.

Note: the front of the upper body needs to be flush with the front of the hull in order to fit on the engines



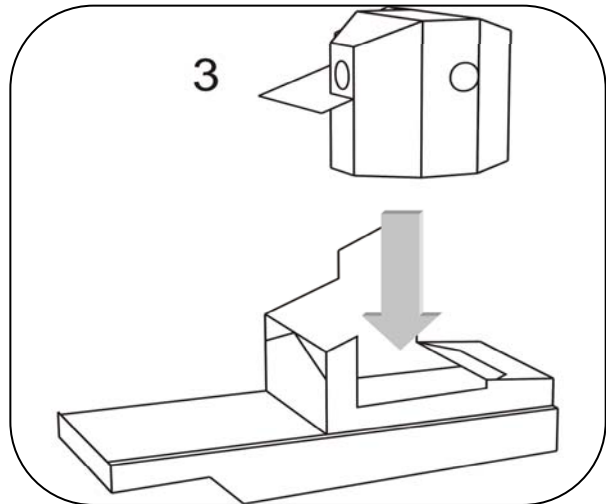
Paperpanzer.co.uk
Medium tank A "Whippet"

- 3, Cut out the crew compartment (part 3), score along dotted lines. The crew compartment folds together in four directions.
- a, The right side folds around full circle to form a "D".
- b, The left side folds in.
- c, The roof of the crew compartment splits into two, the right-hand side covers the "D". The left-hand side is formed around the crew compartment.
- d, There is a floor to the crew compartment that folds underneath (not seen in picture)



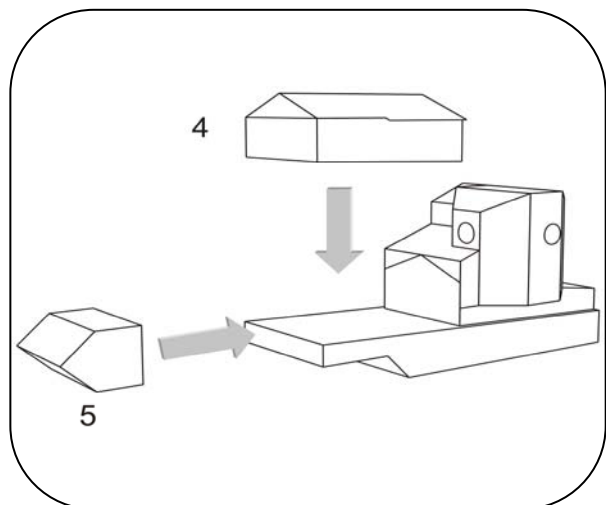
- 4, Once complete the crew compartment can be attached to the upper body.

NOTE: There is an overhang on the right-hand side so that the floor of the crew compartment should fit over the upper body.



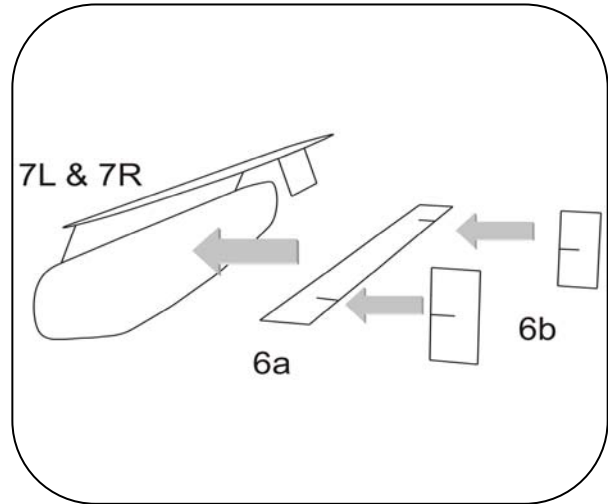
- 5, Cut out the engines (part 4) and score along the dotted lines. To the rear of the engines there is a slight over-hang (where the engine access doors should be)

Once dry the fuel tank (part 5) can be cut out formed and attached to the front of the engines.

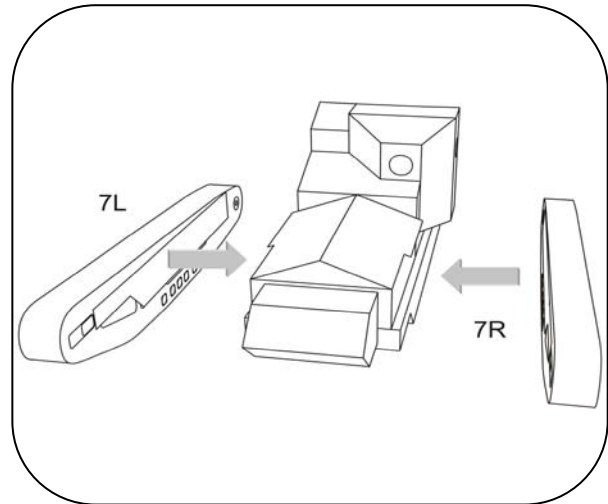


Paperpanzer.co.uk
Medium tank A "Whippet"

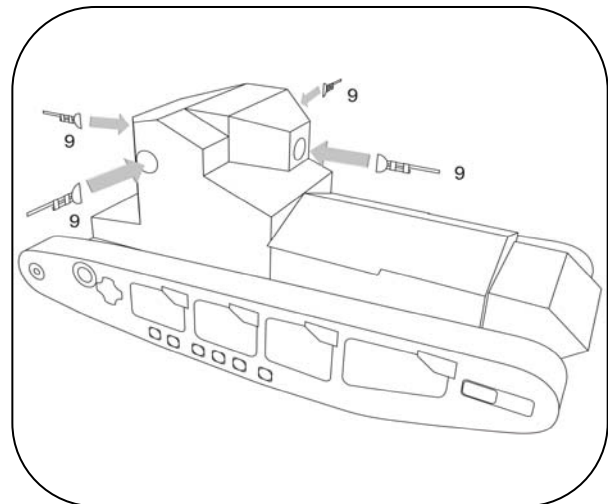
- 6, Parts 7L & 7R are the track sponsons, 6a & 6b are to be glued inside of the sponsons to give them some strength. The tracks (part 8) then wrap around the sponsons, the tracks are slightly wider so there will be a little overhang on either side.



- 7, Attach the sponsons either side of the hull



- 8, Finally the machine guns x4 (part 9), roughly cut out first then fold and glue before cutting to shape. Attach each machine gun in the centre of the ball mount.



Finished